



# Middle School **Innovation** Academy



# Welcome!

For the duration of the event:

- Please mute your microphone
- Video off for privacy
- Ask questions in chat box - Q & A at end



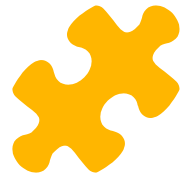
# Welcome!

Rachel Verschaeve

Supervisor of Innovation & Design Thinking

**MSIA Coordinator**

[verschaeve.rachel@sccresa.org](mailto:verschaeve.rachel@sccresa.org) | 810.455.4004



# Meet the Teachers



**Minna Turrell**

TEACHER

Supervisor of Secondary  
Science and Math  
Instruction



**Kristin Day**

TEACHER

Supervisor of Education  
Technology



**Jim Licht**

TEACHER

Supervisor of Secondary  
Math Instruction



**Rachel Verschaeve**

TEACHER

Supervisor of Innovation &  
Design Thinking



# MSIA Orientation

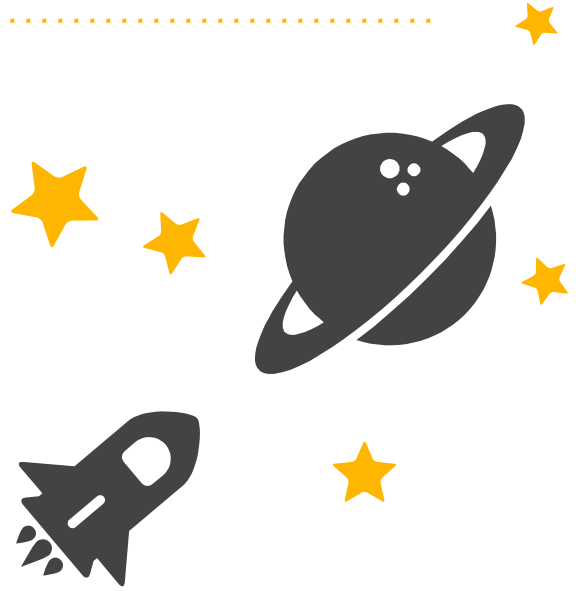
- What is MSIA?
- Program logistics
- Methods of communication
- Registration
- Q&A

# What is MSIA?

Modified for 2022-23 School Year

# Design Thinking

Developing empathy, collaboration, creativity,  
and critical thinking

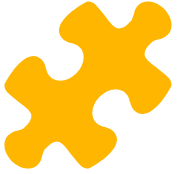




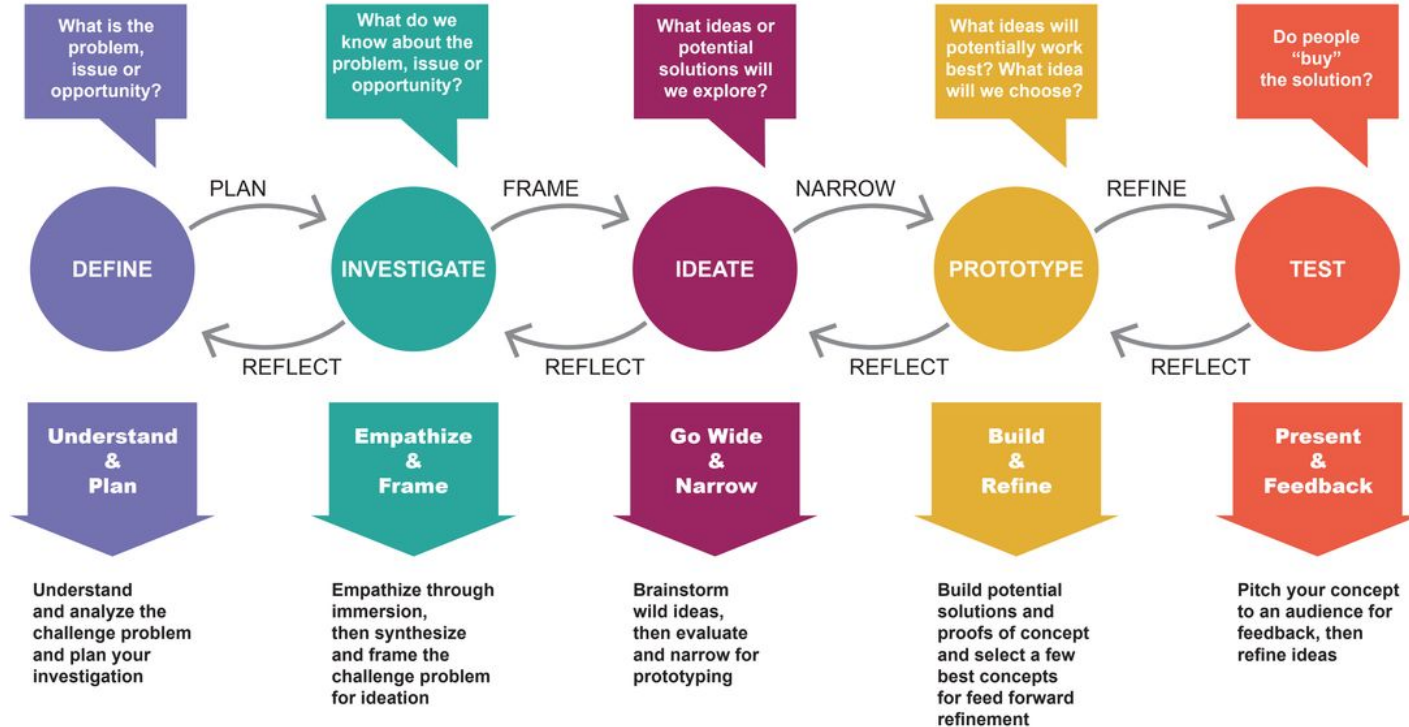
*Design Thinking is a **mindset** and approach to learning, collaboration, and **problem solving**. In practice, the design process is a **structured framework** for identifying challenges, gathering information, generating potential solutions, refining ideas, and testing solutions.*

*-Teaching and Learning Lab,  
Harvard Graduate School of Education*

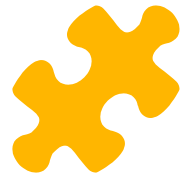




# DESIGN & INNOVATION PROCESS



# Why?





*Knowledge is a habit. Sometimes there's a limit to having new ideas. That's the problem with the old schooling. Because they were teaching answers.*

***I believe that questions today are probably more important today than the answers.***

-Erno Rubik



# Students as Designers

## THE OLD WAY

Design a desk that will hold a laptop, books, and a water bottle

Design a backpack that will hold textbooks and Chromebook

Design a bridge that will support 40 tons of bricks

## THE NEW WAY

How might we improve Johnny's homework environment?

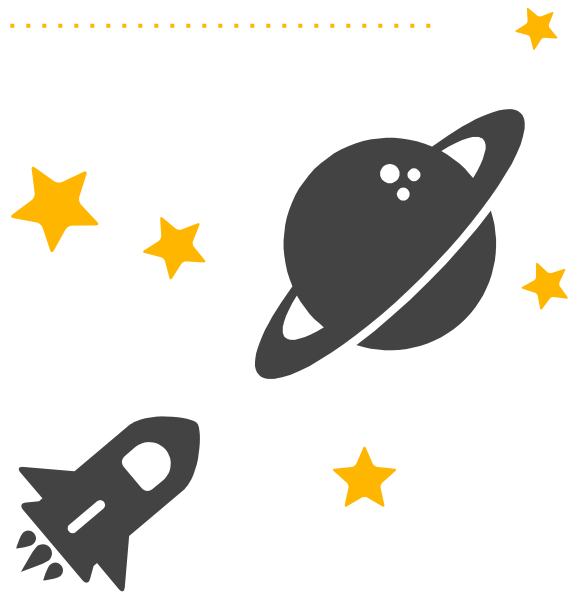
How might Johnny transport learning materials to and from school each day in a way that is safe?

How might Acme transport 40 tons of bricks across the river in a way that is safe and efficient?

Ask questions, keep minds open, and challenge assumptions

# Innovation Practices

How students develop empathy,  
collaboration, creativity, and critical thinking  
during the Design Thinking Process





# SKILLS4THEFUTURE

These 7 employability skills  
are crucial to a successful career



## SKILL #1

### Critical Thinking & Problem Solving

The ability to break down, analyze, and solve complex problems to drive improvement, decision making, and innovation in diverse contexts

## SKILL #2

### Collaboration & Leadership

The ability to accomplish goals with diverse teams in various environments, while leading and inspiring progress without direct oversight

## SKILL #3

### Agility & Adaptability

The ability to work flexibly in diverse environments and ambiguous contexts, while responding positively to change



## SKILL #4

### Initiative & Entrepreneurship

The passion and drive to continually learn and grow, demonstrating responsibility and management of progress in reaching goals

## SKILL #7

### Curiosity & Imagination

The ability to challenge oneself and ask questions with childlike wonder, enthusiastically developing new ideas and solutions through creative approaches

## SKILL #6

### Accessing & Analyzing Information

The ability to obtain implicit and explicit information from various media, using the information ethically when forming and sharing new ideas

## SKILL #5

### Effective Oral & Written Communication

The ability to clearly express ideas in front of diverse audiences in a variety of contexts



**---needs a way to---because---**





# Ask Questions

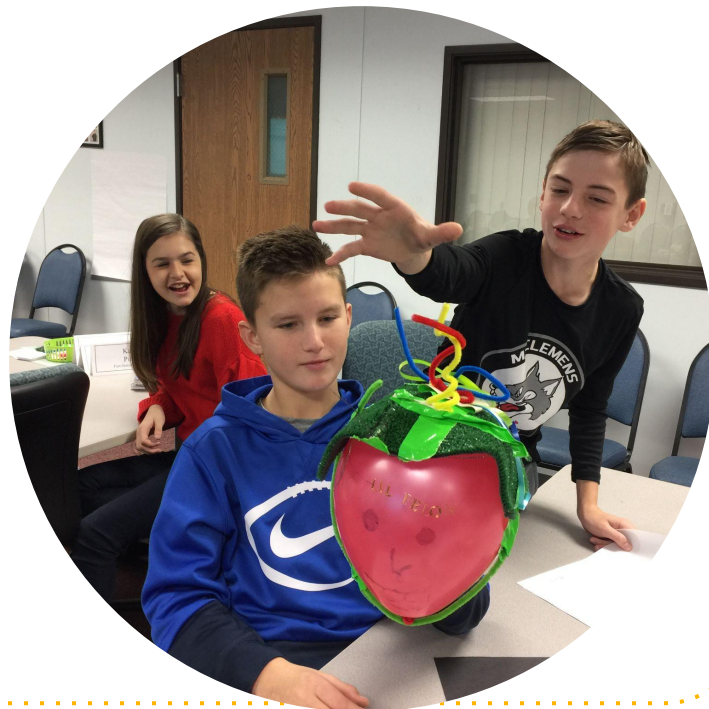
- Seek answers
- Ask more more questions
- Repeat





# Be Open

- Challenge your own assumptions and reject the status quo
- Listen, look, and observe with childlike curiosity
- Practice Vuja De to see things with new eyes
- Find patterns





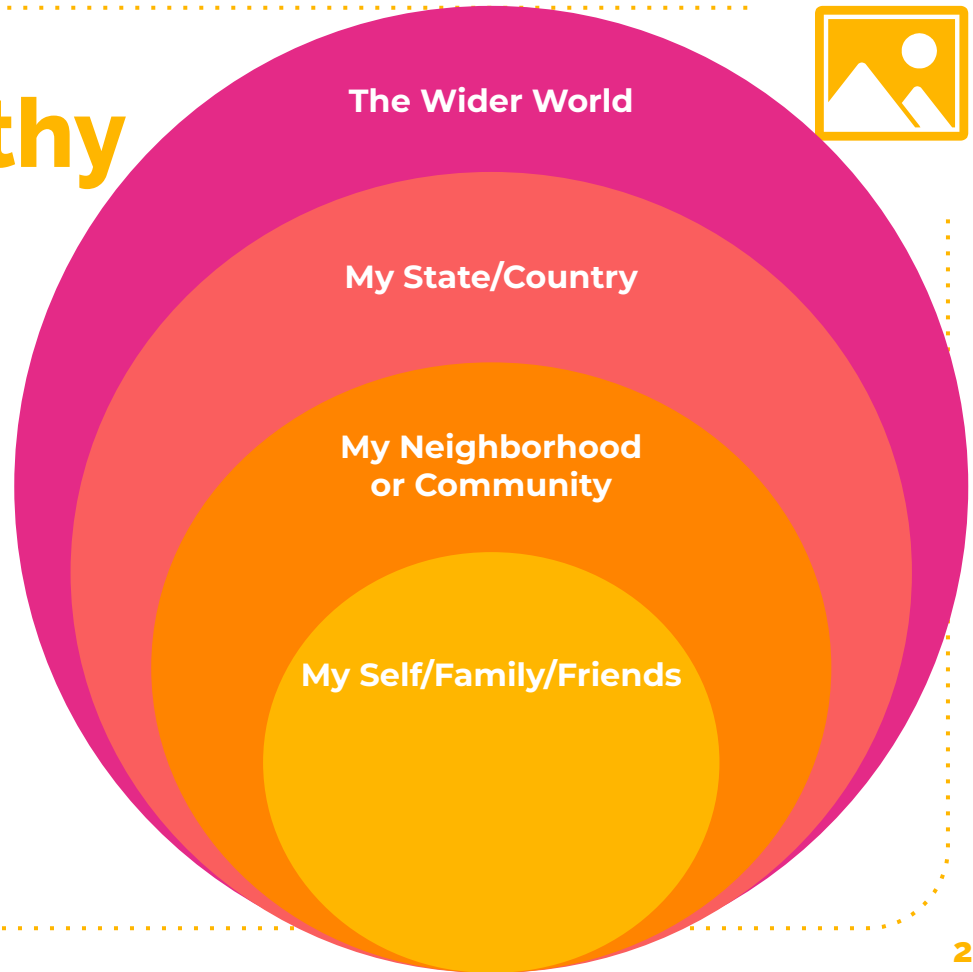
# Empathize

- Put yourself in others' shoes
- Seek to understand others without judgement
- Ask *Why? Why? Why?*
- Listen without speaking



# Circles of Empathy

With empathy being at the heart of design thinking and a much needed trait to be developed within our students and community, the Middle School Innovation Academy will progress through the circles, beginning with the innermost, then tackling problems increasingly more distant from the self.





# Do It Together

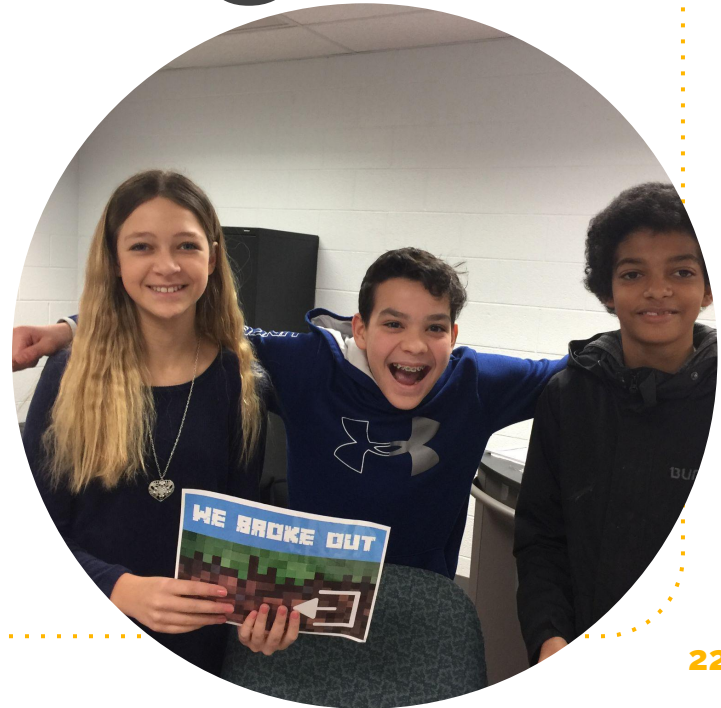
- Share responsibility and knowledge with your team
- Put your heads together
- Value diverse insights, experiences, and people
- Listen before speaking





# Accept Challenges

- Take risks
- Fail forward to learn
- Iterate: prototype, test, feedback, repeat
- Bounce back





# Create

- Play with lots and lots of ideas for a while
- Find ideas in constraint and tension
- Prototype with raw materials







# Reflect

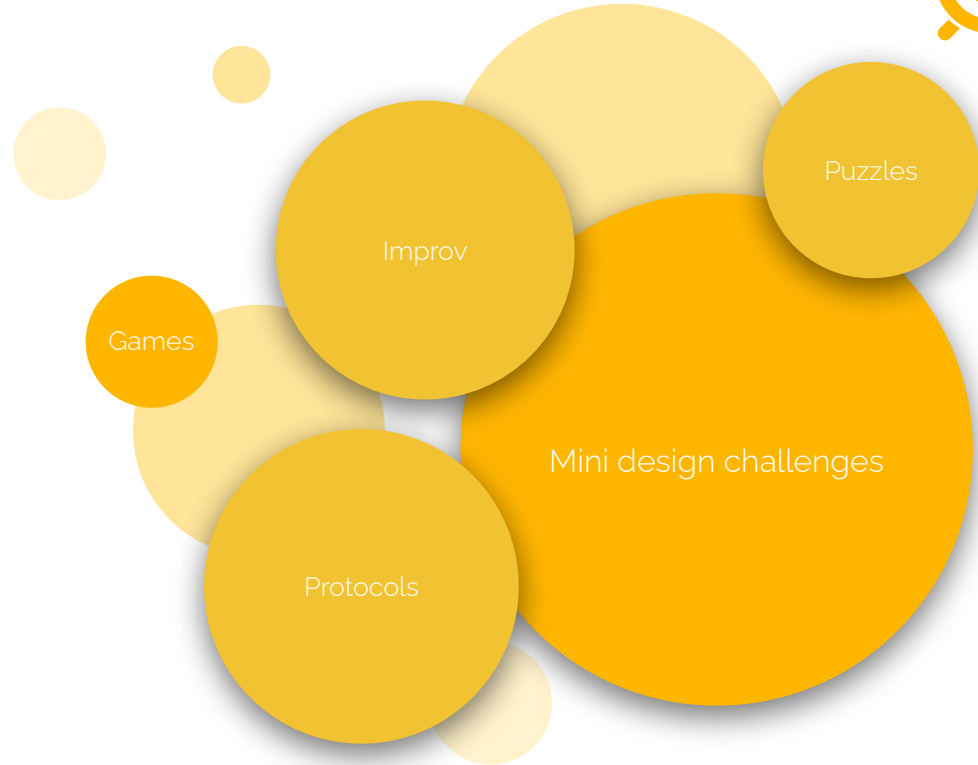
- Think about the process and experience
- Let one experience influence the next
- Repeat







# How we learn and practice the **7 Mindsets**



# Paperclip Challenge



**How many NEW  
uses can you think  
of in 4 minutes?**



## **Rules for Brainstorming:**

- Capture all ideas - one recorder
- Defer judgement
- Encourage wild ideas
- Build on ideas of others
- Stay focused on topic
- One conversation at a time
- Be visual
- Go for quantity



# **What are some changes this year?**

Modified for 2022-23 School Year



# Curriculum

- Shorter challenges
- Local, national, global challenges
- Various team configurations
- Activities adapted for social distancing, as needed



# Location

- Moved to RESA Administration Building
- Open House opportunity tomorrow (August 26) 5-7PM
  - Limit to one parent/guardian with invited student
  - Masks required

499 Range Road, Marysville

*Southwest corner of Smiths Creek and Range Road, first building on right*





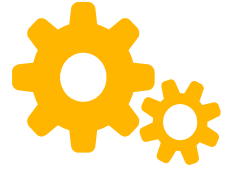




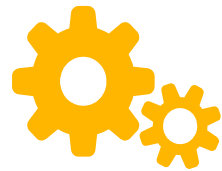
# What are the program logistics?

2021-22 School Year

# Why was I invited?

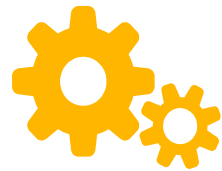


- Academic performance
- Student Characteristics
  - Creativity
  - Asks questions
  - Participates in discussions
  - Works collaboratively with peers
  - Persistent about completing tasks
  - Accepts academic challenges with enthusiasm
  - Expresses ideas in a variety of ways
  - Knowledgeable about a variety of topics



# The Basics

- 7th grade students from all 7 local school districts
- Design Thinking & Problem Based Learning
- Design Sprints
- Partner organizations



# Friday Session

Capac

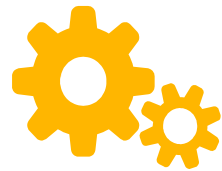
Marine City

Marysville

Memphis

St. Clair

Yale



# Fall Schedule

September 16, 23, 30

October 7, 14, 21, 28

November 4, 11, 18

December 2, 9

January 6, 13

**PM Session\***

11:20AM-2:10PM

\*PM times vary by district



If your school or two or more of our districts are closed due to inclement weather, your class at MSIA is also canceled.

# Communication

- Remind
- Website [sccmsia.weebly.com](https://sccmsia.weebly.com)
- Email, phone



Remind

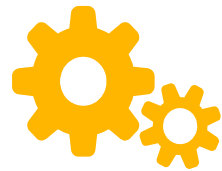


# Join Remind



- Text **@fkbe92b** to the number **81010**
- You will receive a welcome text from Remind
- The parent email address provided at registration will be added
- You may remove yourself at any time





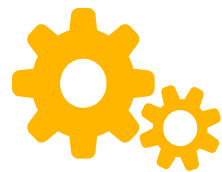
# Registration

- FREE
- Register [here](#) or [bit.ly/MSIA2022](https://bit.ly/MSIA2022)
- Includes health and emergency information



# Transportation

- Students will ride TEC bus to and from RESA
- Drop off and pick up in front of Administration building
- School-specific details provided on transportation document



# Health & Safety

- Do not come to school if you are sick
- If, at any point during the program, your child has tested positive for COVID-19, contact Mindy Slanec at 810.455.4012
- Report all absences to Mindy Slanec at 810.455.4012



# Thanks!

Any questions?

Rachel Verschaeve

[verschaeve.rachel@sccresa.org](mailto:verschaeve.rachel@sccresa.org) | 810.455.4004